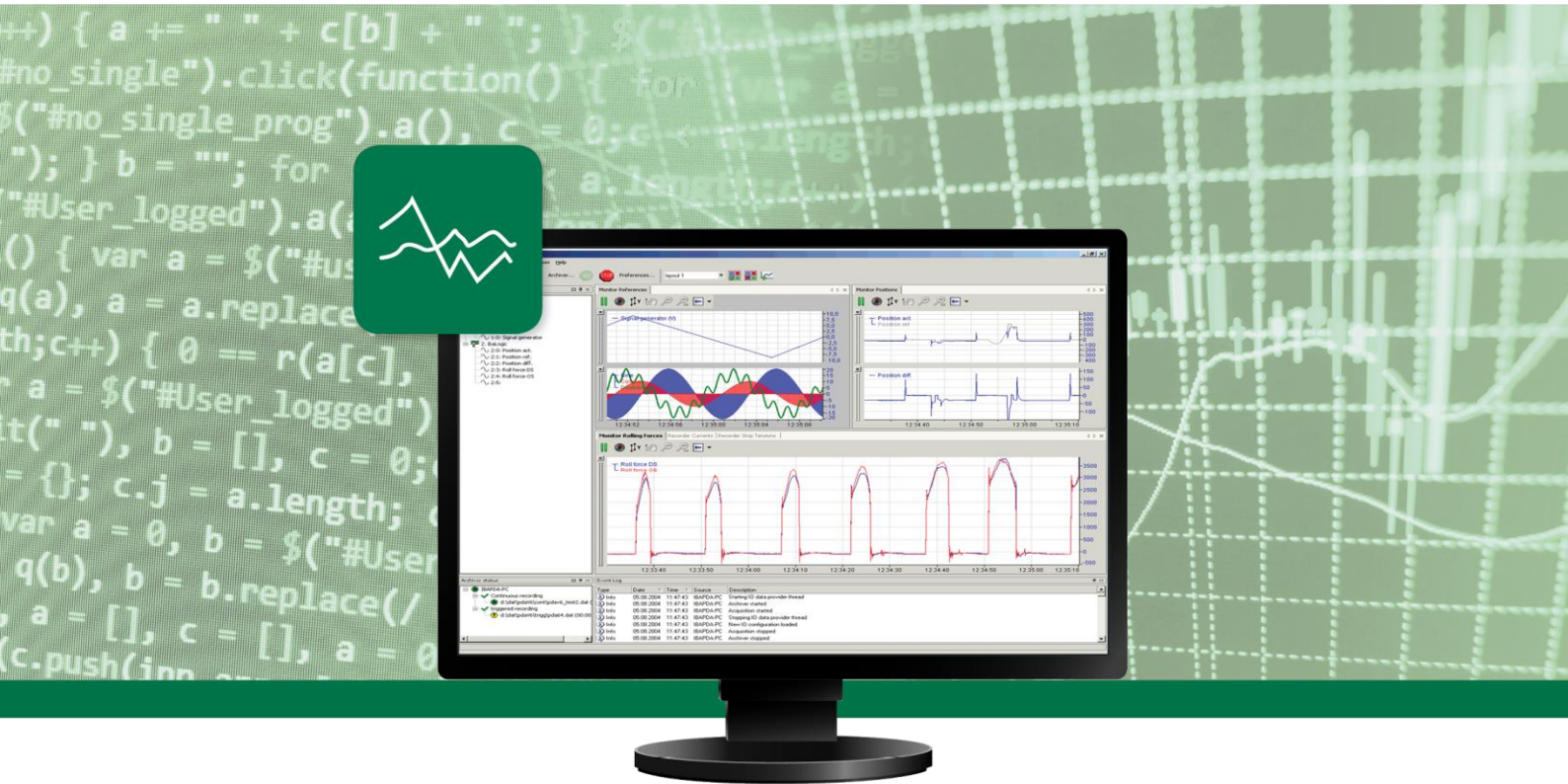




See the Big Picture



Activate WIBU licenses offline

iba Benelux
Kerkstraat 108
9050 Gent
Tel: +32 92262304

**Measurement and
Automation Systems**

Activate WIBU licenses offline

If the target system has internet access, activating a WIBU upgrade is easiest. However, if it doesn't, you'll have to activate the upgrade using an offline process which we'll describe in this guide.

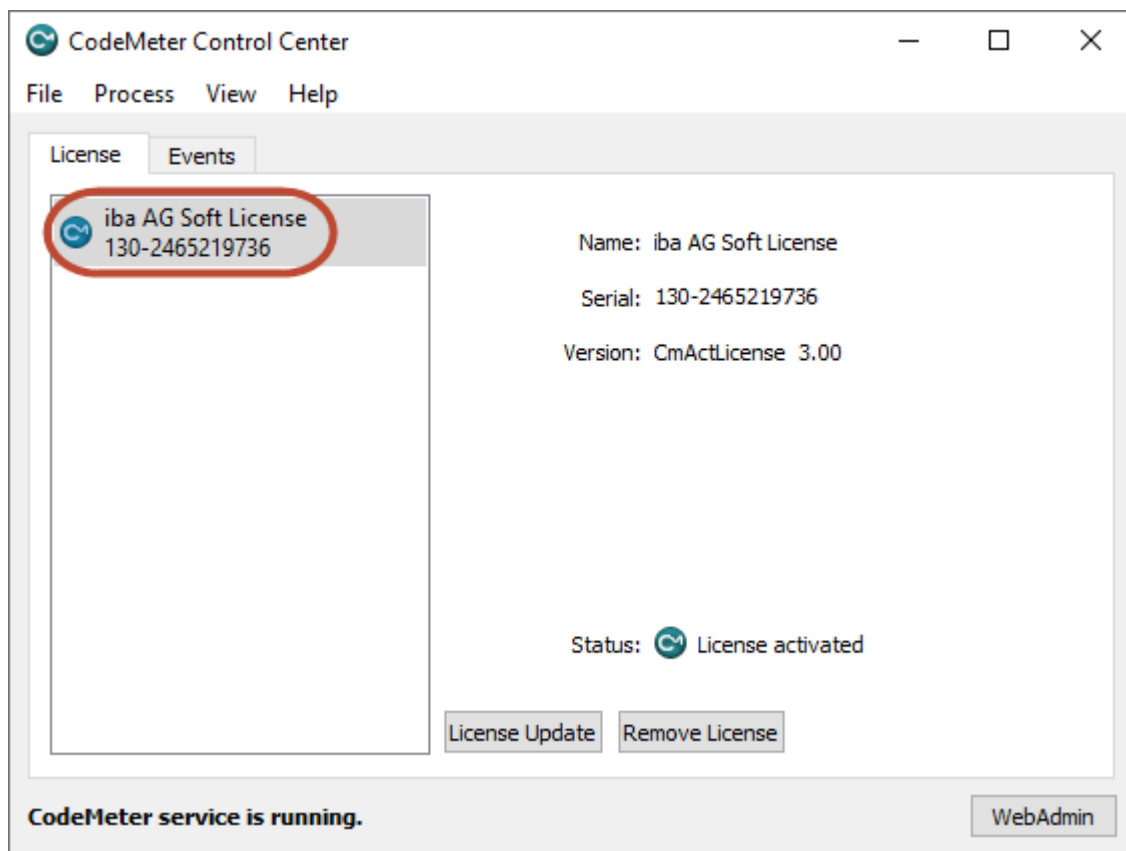
Firstly, ensure that the iba software is installed correctly, which should have automatically installed the WIBU driver software, Codemeter Control Center. Open Codemeter Control Center on the target system and verify if you have a container available (3-XXXXXX for physical containers via USB dongle, 130-XXXXXX for soft containers).

You currently don't have a container available

If you don't have a container available, follow the instructions further in the document if the target system has a direct internet connection. A new container will be automatically created.

If you're using a physical dongle, ensure that it's plugged in correctly.

In case the target system doesn't have an internet connection and you wish to create a new soft license, we'll need to create a new soft container manually. To do so, open Windows File Explorer and execute the '**iba_AG_Soft_License.wibucmlif**' file. A new soft container will be imported automatically.

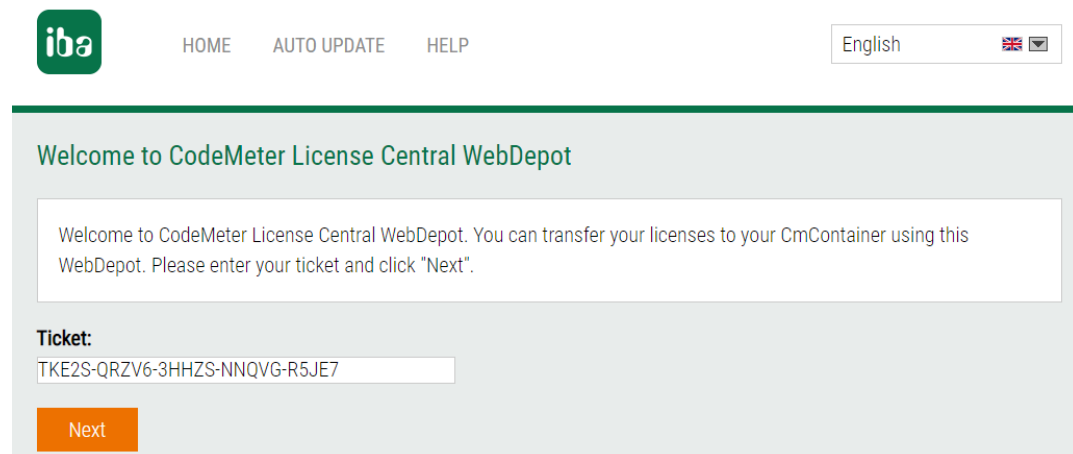


Activate a license upgrade on an existing container via offline file transfer

To upgrade a WIBU license, you must go through the iba license portal and use a container number (e.g., TKE2S-QRZV6-3HHZS-NNQVG-R5JE7) as reference.

It's important to note that an offline activation requires two computers: Machine 1, which must have internet access, and the target computer where you intend to use the license, referred to as Machine 2.

To begin the activation process, navigate to <https://license.iba-ag.com/index.php> on Machine 1 and enter your ticket number:



iba HOME AUTO UPDATE HELP English

Welcome to CodeMeter License Central WebDepot

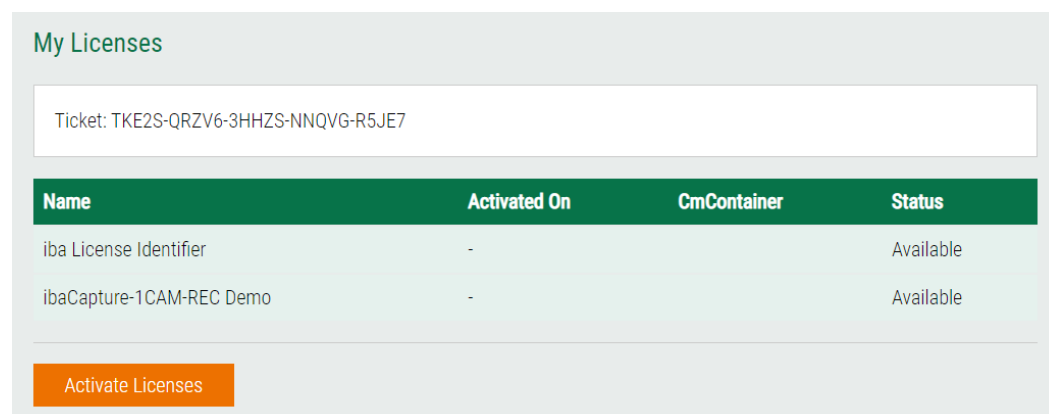
Welcome to CodeMeter License Central WebDepot. You can transfer your licenses to your CmContainer using this WebDepot. Please enter your ticket and click "Next".

Ticket:
TKE2S-QRZV6-3HHZS-NNQVG-R5JE7

Next

Alternatively, you can use the direct link: <https://license.iba-ag.com/get.php?id=TKE2S-QRZV6-3HHZS-NNQVG-R5JE7> (be sure to substitute the example ticket number with your own).

Once you access the portal, you'll be able to see all available licenses. In this example, we're adding a single camera license to our dongle. However, note that this step won't be visible when using the direct link.



My Licenses

Ticket: TKE2S-QRZV6-3HHZS-NNQVG-R5JE7

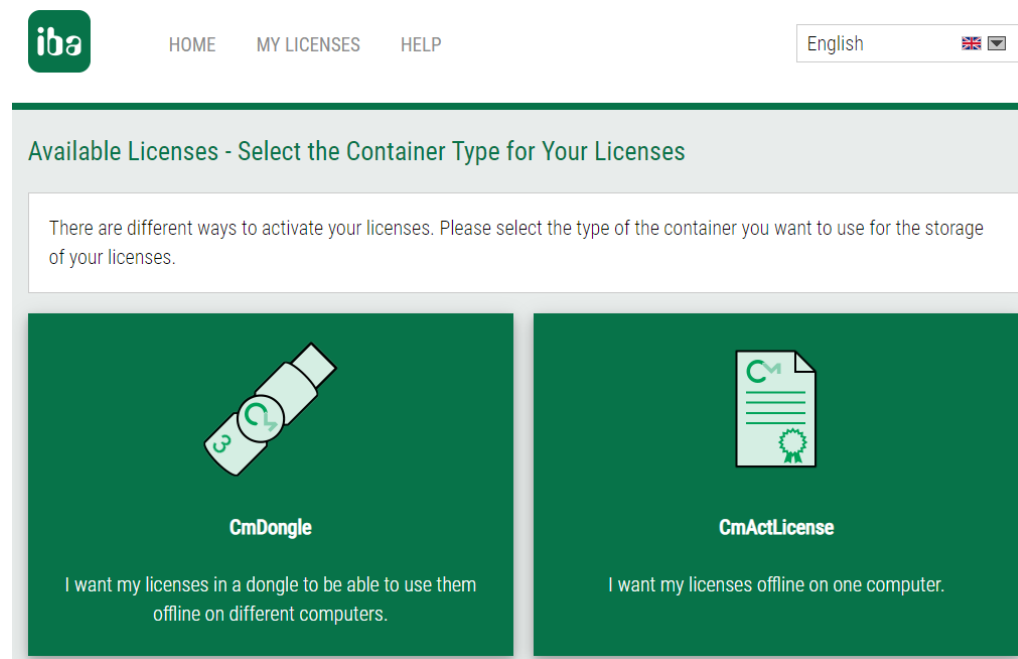
Name	Activated On	CmContainer	Status
iba License Identifier	-		Available
ibaCapture-1CAM-REC Demo	-		Available

Activate Licenses

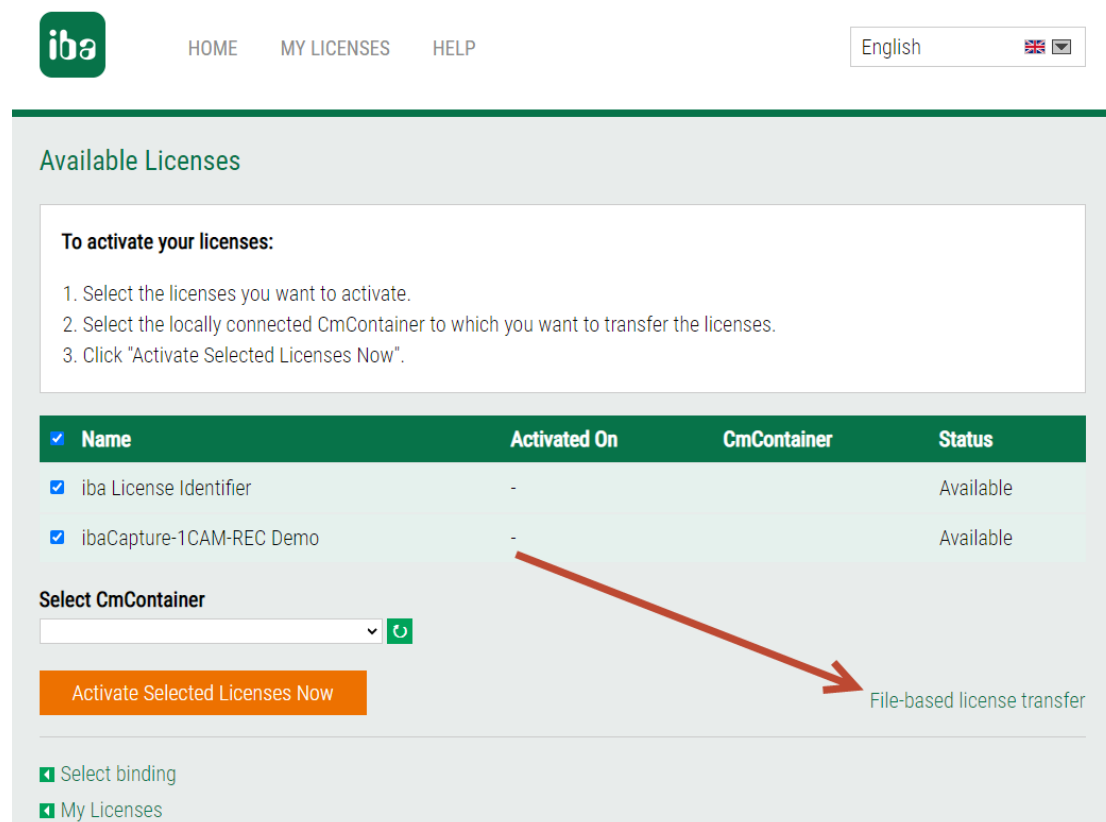
The next step is to specify if you're activating a license on a soft container or a physical dongle within the license portal.

If you're adding a license to an existing physical dongle, select the 'CmDongle' option. On the other hand, if you're adding a license to an existing soft container, select the 'CmActLicense' option.

Activate WIBU licenses offline



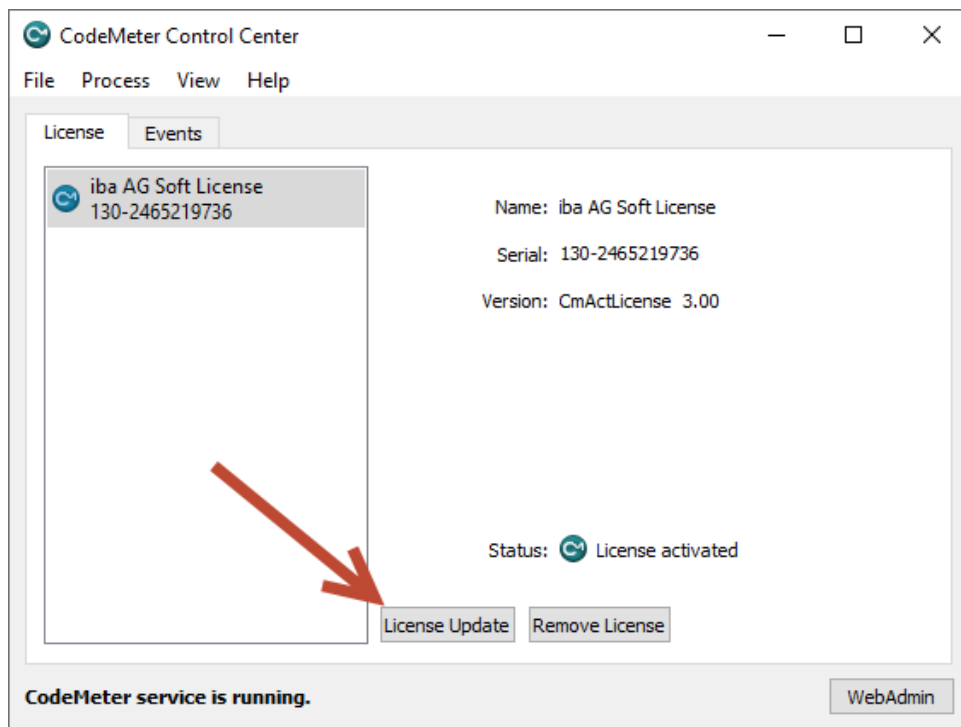
The license portal typically displays the online activation option by default. Therefore, to proceed with the offline activation process, click on 'File-based license transfer' located on the right-hand side.



The same steps explained in this manual are also written in the portal.

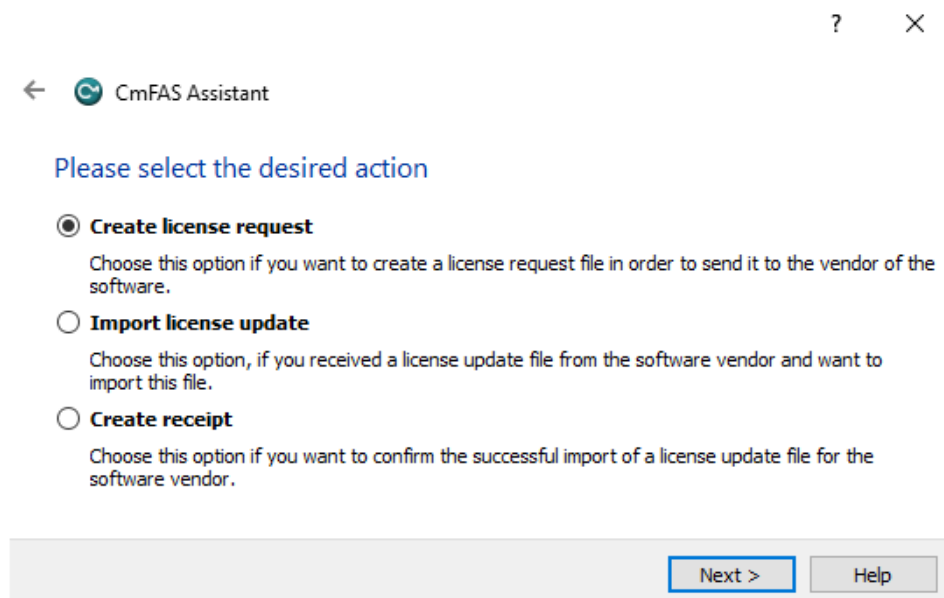
Now, switch to Machine 2, open Codemeter Control Center, and select 'License Update' to proceed.

Activate WIBU licenses offline



After opening 'License Update' on Codemeter Control Center, continue by clicking 'Next' until you arrive at the step shown below, where you'll need to select 'Create license request' from the list of options.

By selecting this option, Codemeter Control Center will generate a file that contains all relevant information about the current container. This file will be used to check whether the licenses present on the dongle match those in the online database.



Click 'Next', and choose a location on your computer to save the generated file. Note that the file extension will be '.WibuCmRaC'.

Activate WIBU licenses offline

Next, copy the file to Machine 1, and navigate to your license portal. Upload the saved file to the portal to continue with the offline license activation process.

The screenshot shows a web interface for license activation. At the top, there is a table with the following columns: Name, Activated On, CmContainer, and Status. The table contains two rows: 'iba License Identifier' and 'ibaCapture-1CAM-REC Demo', both with a status of 'Available'. Below the table, there is a section titled 'Select an already used CmContainer' with a dropdown menu showing 'No CmContainer found!'. Below this, there is a section titled 'Pick a license request file (*.WibuCmRaC) of another CmContainer' with a text input field containing 'Bestand kiezen' and '130-2465219736.WibuCmRaC'. To the right of the input field is a red arrow pointing to it. Below the input field is an orange button labeled 'Start Activation Now' with a red arrow pointing to it. To the right of the button is a green link labeled 'Direct license transfer'. At the bottom, there are two green links: 'Select binding' and 'My Licenses'.

Name	Activated On	CmContainer	Status
iba License Identifier	-		Available
ibaCapture-1CAM-REC Demo	-		Available

Select an already used CmContainer

No CmContainer found! ▼

or

Pick a license request file (*.WibuCmRaC) of another CmContainer

Bestand kiezen 130-2465219736.WibuCmRaC

Start Activation Now

Direct license transfer

Select binding

My Licenses

Make sure that the correct file has been selected, and click 'Start Activation Now' to proceed.

Once the activation process is complete, click 'Download License Update File Now' to download the license update file.

The screenshot shows a web interface titled 'Download License Update File'. At the top, there is a progress bar with three steps: 'Upload Request' (checked), 'Download Update' (active), and 'Upload Receipt'. Below the progress bar, there is a box with the title 'To transfer your licenses via file - Second step "Download Update":'. The box contains three numbered instructions: 1. Click "Download License Update File Now" and save the file on your computer. 2. Import this license update file to the CmContainer with Serial 130-2465219736. This file can for example be imported with CodeMeter Control Center. How it works. 3. After you have successfully transferred the license update file to the CmContainer, click "Next" to confirm the license transfer. Below the instructions, there are two orange buttons: 'Download License Update File Now' and 'Next'. To the right of the buttons is a green link labeled 'Direct license transfer'. At the bottom, there is a green link labeled 'My Licenses'.

Download License Update File

Upload Request ✓ Download Update Upload Receipt

To transfer your licenses via file - Second step "Download Update":

1. Click "Download License Update File Now" and save the file on your computer.
2. Import this license update file to the CmContainer with Serial 130-2465219736. This file can for example be imported with CodeMeter Control Center. How it works.
3. After you have successfully transferred the license update file to the CmContainer, click "Next" to confirm the license transfer.

Download License Update File Now Next


Direct license transfer

My Licenses

Upon clicking 'Download License Update File Now', a file with the extension '.WibuCmRaU' will be downloaded. Copy this file from Machine 1 to Machine 2.

Once the file has been transferred, return to Codemeter Control Center on Machine 2, and select 'License Update' once more. This time, choose the option 'Import License':

? ×

←  CmFAS Assistant

Please select the desired action

- ☐ **Create license request**
Choose this option if you want to create a license request file in order to send it to the vendor of the software.
- ☒ **Import license update**
Choose this option, if you received a license update file from the software vendor and want to import this file.
- ☐ **Create receipt**
Choose this option if you want to confirm the successful import of a license update file for the software vendor.


Next > Help

Once the license update has been successfully imported to Machine 2, the container will now contain the added licenses.

However, it's important to finalize the process by confirming with the license portal that the license import was successful. Failure to do so may result in future upgrade issues due to a mismatch between the dongle information and the database information.

To confirm the license import, go to Codemeter Control Center on Machine 2, and immediately after importing the license update, select 'License Update' once more. This time, choose the option 'Create Receipt':

? ×

←  CmFAS Assistant

Please select the desired action

- ☐ **Create license request**
Choose this option if you want to create a license request file in order to send it to the vendor of the software.
- ☐ **Import license update**
Choose this option, if you received a license update file from the software vendor and want to import this file.
- ☒ **Create receipt**
Choose this option if you want to confirm the successful import of a license update file for the software vendor.

Next > Help

After creating the receipt file in Codemeter Control Center on Machine 2, save the file to a local location. It is important to note that the file extension is identical to the license request file, which is .WibuCmRaC. When copying the file to Machine 1 and uploading it to License Central, make sure to

Activate WIBU licenses offline

select the correct file by checking its time stamp. Uploading the wrong file may result in an error in License Central.

Once you have confirmed that you have the correct receipt file, select it and click on 'Upload Receipt Now'. This step confirms to License Central that the license import was successful and ensures that the information in the online database matches the information on the container. It is an important step that must be done correctly to avoid issues with future upgrades.

Confirm License Transfer

Upload Request ✓ Download Update **Upload Receipt**

To transfer your licenses via file - Third step "Upload Receipt":

1. Create a license receipt file from the CmContainer with **Serial 130-2465219736** and **Firm Code 6000506**. This file can for example be created with CodeMeter Control Center. [How it works](#) +
2. Select the created license receipt file.
3. Click "Upload Receipt Now".

If you haven't imported the license update file yet, you can download it again. Click "Back" to get to the download page.

Pick license receipt file (*.WibuCmRaC)

Bestand kiezen | 130-2465219736.WibuCmRaC

Upload Receipt Now **Back** Direct license transfer

My Licenses

The upgrade succeeded successfully:

License Transfer Successfully Completed

The license transfer has been completed successfully.

OK

In order for the newly installed licenses to be detected, it is necessary to restart all IBA services.